

**WE RECOMMEND
READING
THE INSTRUCTION
before use!**

ePAD^R





epad^R

CONGRATULATION

We are very happy that you have decided to purchase a the ePAD Relax and wish you a relaxing and wonderful feeling of wellness in using our product.

In ancient times the people used the positive effects of the magnetic field. The magnetic field is one of the oldest powers on our planet and has always been influential on the animal- and flora world. Also for us the earth magnetic field is vital. It gives us energy and protects us for cosmic radiation. The body regains the energy he loses through environmental influences in everyday life.

You have the possibility to use the ePAD Relax as your “private” magnetic field wherever you are.

ENERGY – RELAXING – MOBILITY

No matter where you are, after sport activities, on longer journeys, in the office, at home or on travel. The ePAD Relax should always be your constant companion, whenever you have the urge to relax.

The following pages of this instruction inform you about all the details and the easy use of the ePAD Relax.

We wish lots of fun and success with our product

Your ePAD-Team

*We work together with
the Energy of the earth!*

1. SIGNS AND SYMBOL



Read manual carefully



do not
through into open fire



do not through into litter



rechargeable



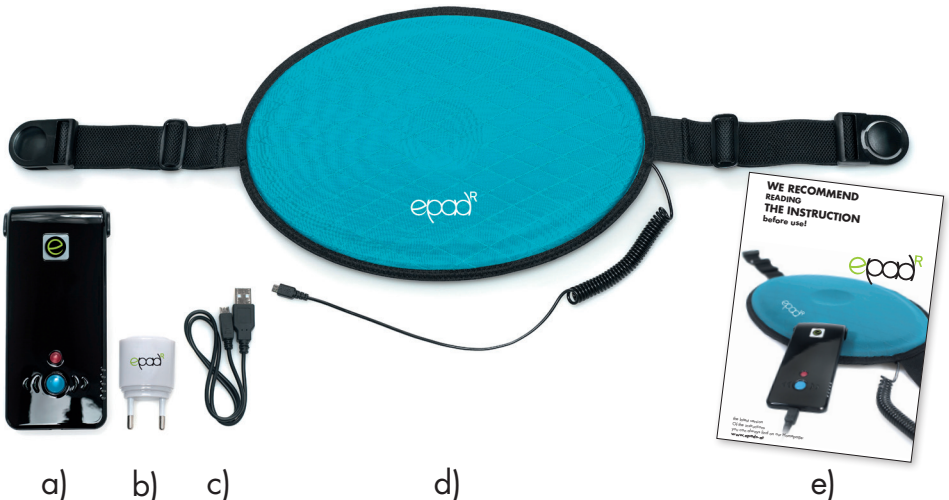
do not throw into water



SCOPE OF DELIVERY:

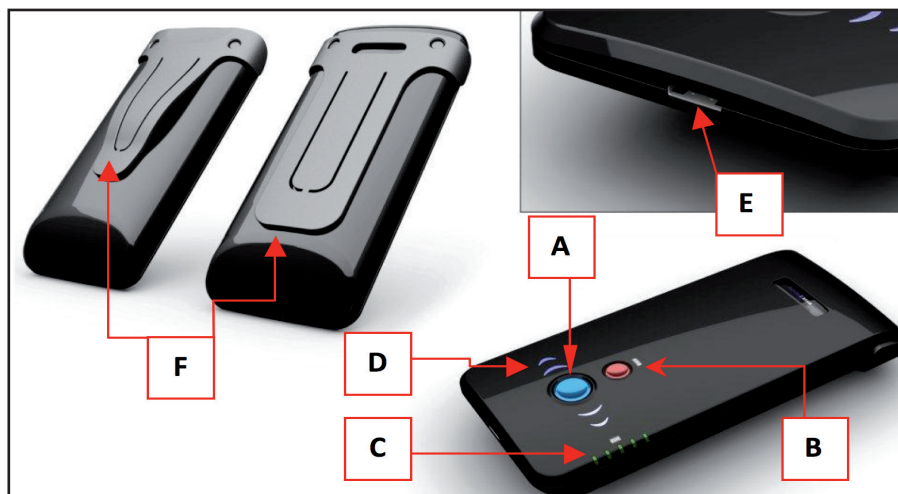
ePAD RELAX

- a) Controller
- b) Charger
- c) Charger cable
- d) ePAD
- e) Instruction



2. EXPLANATION OF THE DEVICE

ePAD Relax is a portable and pulsating magnetic field Stimulation device, with which you can treat particular areas optimally or just boost up your energy.



A on/ off button + program selection

B battery check (refer to page 8)

C battery charging display

D program display

E connection for ePAD Relax/connection of charging cable
(NEW with USB connection cable)

F restraint clip

The controller must not get in contact with water.

CONTRAINDICATIONS

Persons with electronic implants, pregnancy and persons with epileptic fits should not use the magnetic field.

3. TECHNICAL DATA

IMPULSIVE FORM:	Rectangular frequency
FREQUENCY:	3 hertz, 5 hertz, 8 hertz
POWER:	Rechargeable Lithium-ion battery (4000mA, 3,6 volt), micro-USB To charge up the battery please use the charger enclosed.
BATTERY POWER*:	Depends on the frequency and temperature (at 20°C /68°F) approx 5-6 hours
STORAGE TEMPERATURE:	-20° C to +40° C / -4° F to 113° F
INTERNAL MATERIAL:	EVA-foam
EXTERNAL MATERIAL:	polyamide
CONTROLLER:	plastic

IMPORTANT: recharge the controller continuous of a minimum of 8 hours for the first time use.

***The battery power varies according to the surrounding temperature and program choice!**

4. WARRANTY

MAS medical product trading company gives 2 (two) years of warranty on the ePAD Relax from the date of purchase to the first customer/ first buyer. It is only valid with prove of purchase. Please keep the receipt on a save place.

This warranty expands to cover the controller and also the applicator and covers all the defects, which are due to bad quality of the material and/or faulty installations.

NOT INCLUDED IN THE WARRANTY ARE:

- Battery
- Damage caused by improper handling, accident or disregard to important hints
- Cracked or broken casing
- Yanked cable and/or damages on the plug
- Attempt of self-repair and/or own battery replacement

This guarantee does not affect the statutory rights of the consumers under the applicable national laws in the consumer's rights against the dealer arising from their sales/purchase contract.

NOTE!

Service and repairs or a necessary exchange of battery may only be done by the manufacturer or by certified specialists. By non-compliance the warranty becomes invalid!

RETURN IN THE EVENT OF WARRANTY:

In the event of warranty the device has to be sent back to MAS. If the device is returned under warranty, the buyer bears the cost of shipping to MAS, while MAS will take over the dispatch cost when returning the device back to the buyer.

5. CARE AND MAINTENANCE

The following instructions will help you to fulfil the warranty conditions.

- Clean the surface of the ePAD Relax regularly with a damp (not wet) cloth and let it air-dry.
- Do not put the ePAD Relax on source of heat (a radiator, heater or tiled stove etc.)
- Do not use any detergent or abrasive cleaner (for example chemical cleaning agents or steel wool).
- Never put the ePAD Relax in the washing machine or dryer
- Keep the ePAD Relax always on a cool and dry place
- Take out the USB stick carefully from the controller
- The controller must not get in contact with water.

6. DISPOSAL

To protect the environment the device including the battery should be disposed of as hazardous waste. Thank you!

7. INSTRUCTION FOR USE

CONTROLLER

Take the controller and connect it to the cable of the applicator. Now press the red button **(B)** to test the battery power. It shows you the current battery charged condition. The higher the amount of green glowing diodes **(C)** the better is the battery charged condition.



HOW TO PUT ON THE RESTRAINT CLIP AND THE REMOTE



STARTING THE EPAD RELAX AND PROGRAM CHOICE:

Press the blue button **(A) once (1x)**: now both waves (D) begin to flash **RED** every 4 seconds. Now you are in **program 1 (8 hertz)**. This represents the frequency of the organism of the body in state of wakefulness. It also assists the body with an energetic back up.

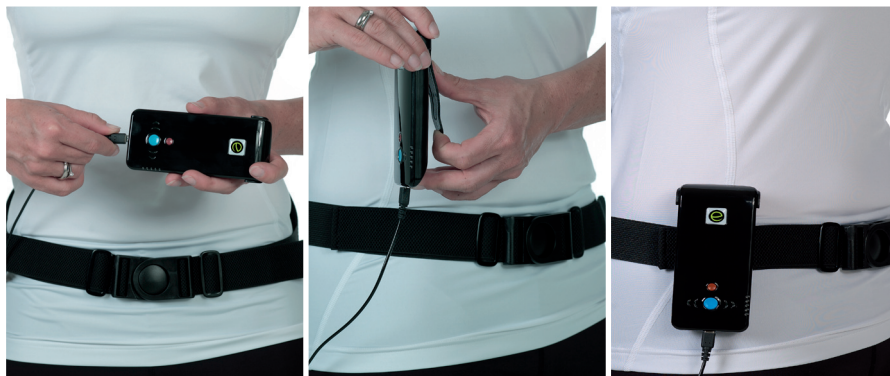
Press the blue button **(A) twice (2x)**: now both waves (D) flash **BLUE** every 4 seconds. Now you are in **program 2 (5 hertz)**. This represents the frequency of the organism in the sleeping phase and relaxes the body.

Press the blue button **(A) three times (3x)**: now both waves (D) flash **GREEN** every 4 seconds. You are now in **program 3 (3 hertz)**. This represents the frequency of the organism in deep sleep; the body relaxes completely and cramps disappear.

Press the blue button **(A) four times (4x)**: the device is turned off.

The device runs when the two waves (D) flash every 4 seconds at the same time. Now you can fix the controller on the belt clip (F). The program runs automatically for 25 minutes. Afterwards the device turns itself off automatically and the program is finished. You can stop a chosen program any time and by pressing the blue button (A) and change in another program or restart a program.

TO ATTACH THE CONTROLLER PROPERLY



EXAMPLES OF APPLICATION:

OFFICE



CAR



TROUBLESHOOTING

Error

No light shows

Right wave doesn't light up

cause

battery empty

contact interruption

solution

connect the controller to the charger

check the USB connection



epad^R

Copyright 2011 - MAS medical trading company

Instruction ePAD Relax; first edition; is valid from 1st of September 2011. All rights reserved. All form of duplication in whole or in extracts, or translation according to the Copyright law is not permitted unless approved by MAS in writing.

MAS medical trading company

www.masmagnetics.com

Warranty card

Please fill all the points in BLOCK LETTERS and attach the warranty card and prove of purchase when returning the product.

Serial number:

Date of purchase:

Name:

Address:

Short description of

fault:

Dealer's stamp:

